

Plas Glansefin : Glansevin Mansion

Prices effective 1<sup>st</sup> Jan - 31<sup>st</sup> Dec 2025 & include VAT @20.00%

<b>LOW SEASON</b>	<b>weekend</b> <b>2 nights</b>	<b>mid week</b> <b>2 nights</b>	<b>week</b> <b>6 nights</b>
	<i>(4pm arrival and departure) (4pm arrival and departure) (4pm arrival to 10am departure)</i>		
<b>The Mansion</b> <i>Rms 1-10, 14 sleeps 26 with all communal areas, grounds etc.</i>	£7,050	£7,050	£10,720
Additionally <b>Tudor Suite</b> <i>Rms 11-13, sleeps 5</i>	£650	£650	£980
<b>Flat 1</b> <i>3 Rooms, sleeps 5</i>	£540	£540	£820
<b>Flat 2</b> <i>3 Rooms, sleeps 6</i>	£650	£650	£980

**For weekends: adding Thursday with 4pm arrival: £950 Adding Sunday with 10am Monday departure: £700**

<b>HIGH SEASON</b>	<b>weekend</b> <b>2 nights</b>	<b>mid week</b> <b>2 nights</b>	<b>week</b> <b>6 nights</b>
	<i>(4pm arrival and departure) (4pm arrival and departure) (4pm arrival to 10am departure)</i>		
<b>The Mansion</b> <i>Rms 1-10, 14 sleeps 26 with all communal areas, grounds etc.</i>	£7,960	£7,960	£11,500
Additionally <b>Tudor Suite</b> <i>Rms 11-13, sleeps 5</i>	£740	£740	£1,100
<b>Flat 1</b> <i>3 Rooms sleeps 5</i>	£610	£610	£920
<b>Flat 2</b> <i>3 Rooms, sleeps 6</i>	£740	£740	£1,100

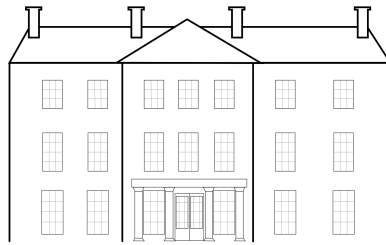
**For weekends: adding Thursday with 4pm arrival: £1,030 Adding Sunday with 10am Monday departure: £760**

**\*\* High Season: Easter break, bank holiday weekends, July & August. Christmas and New Year, price on application**

### Carriage Rooms

The Carriage Rooms used to be part of Glansevin but are now owned separately and let as an extension to Glansevin. They provide 8 rooms sleeping 16 people.

Cont'd....



Plas Glansefin : Glansevin Mansion

*(prices continued)*

### **Other Charges**

Glansevin wedding venue fee: £770 - this includes our venue registrar fee & up to 42 residential guests

Day guests: £19 per adult

Day guests staying in the Carriage Rooms: £18 per adult

Marquee: £660 fee plus cost of marquee which is booked separately

Glansevin is dog friendly: £55 per dog (maximum 3 dogs)

Car charging - we have a 7 kWh Type 2 charging point - price on application

Over 80 guests we also need a portaloos - price on application

Staff helpers for clearing and washing up: £17/hr/person, min. £61/person (inc. admin fee £10)

### **deposit**

A non-refundable deposit equal to thirty percent of the total tariff is required to secure any booking, except where the first day of the Client's stay is less than 12 weeks (84 days) away, in which case full payment should be made.

### **security deposit**

Two weeks prior to arrival, the sum of £1000 will be required from the client or their party as security against damages or breakages during the period of hire. This will be refunded within 14 days of your return, less any costs incurred. Payment can be made by bank transfer. This needs to be sent as a separate payment.

### **cancellation charges**

the following cancellation charges apply:

- over 56 days: full deposit 30% will be due
- 29 to 56 days: 50% of total rental cost will be due
- 15 to 28 days: 75% of total rental cost will be due
- 0 to 14 days: 100% of total rental cost will be due

Bookings are on an exclusive and self catered basis.

Please contact us to discuss your numbers and sleeping requirements.

Room plans are available and can be forwarded on to you.

[enquiries@glansevin.com](mailto:enquiries@glansevin.com)

Glansevin Mansion, Llangadog, Carmarthenshire, SA19 9HY

[enquiries@glansevin.com](mailto:enquiries@glansevin.com) [www.glansevin.com](http://www.glansevin.com)